



### ENJOY HEMP

Sample 634-125673-252

Sour Diesel

Batch/Lot # 20240111-HW-LZK

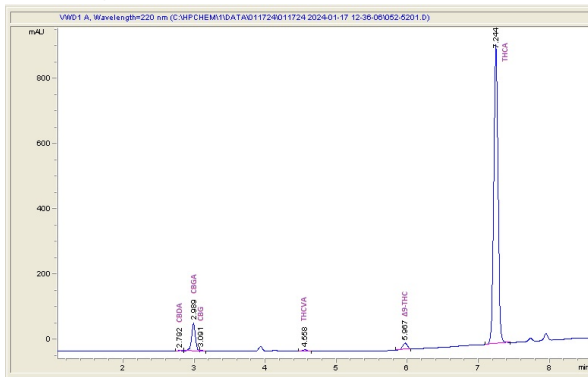
Sample Submitted: 12-12-2023; Report Date: 01-23-2024

### Sour Diesel

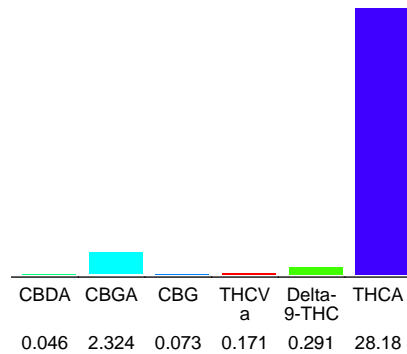
Plant Material: Hemp Flower

Batch/Lot # 46783216-SD-LZZ

#### Chromatogram



#### Cannabinoid Profile



#### Cannabinoid Profile by HPLC

**0.29%**  
Delta-9-THC

**0.00%**  
CBD

**31.09%**  
Total Cannabinoids

| Cannabinoid                 | % wt         | mg/g          |
|-----------------------------|--------------|---------------|
| CBDA                        | 0.046        | 0.46          |
| CBGA                        | 2.324        | 23.24         |
| CBG                         | 0.073        | 0.73          |
| THCVa                       | 0.171        | 1.71          |
| Delta-9-THC                 | 0.291        | 2.91          |
| THCA                        | 28.18        | 281.8         |
| <b>Total Cannabinoids</b>   | <b>31.09</b> | <b>310.9</b>  |
| <b>Calculated Total THC</b> | <b>27.56</b> | <b>275.56</b> |
| <b>Calculated CBD Yield</b> | <b>0.04</b>  | <b>0.40</b>   |

Calculated Total THC = Delta-9-THC + 0.877 \* THCA

Calculated Maximum CBD Yield = CBD + 0.877 \* CBDA

#### Marin Analytics, LLC

250 Bel Marin Keys Blvd, Suite D4  
Novato, CA 94949

833-321-TEST / info@marinanalytics.com

**Mike Clemmons**  
Lab Manager